

Preliminary Demographic Findings From DSS Baseline Survey

Awach Sub County is in Gulu District, Aswa County. It has a total of four Parishes and 13 villages with an estimated population of 15,000 people. The Baseline census has so far covered 3 parishes with one about to be completed by the first week of August.

We have involved the Field Assistants into data entry as a means of speeding up the process. Therefore data entry is intensive when the Field Assistants are out of the field. This has created a gap between the Data collected from the field and that entered into the system. At the moment the data entered into the system is at 41.8% of the estimated population of the DSA.

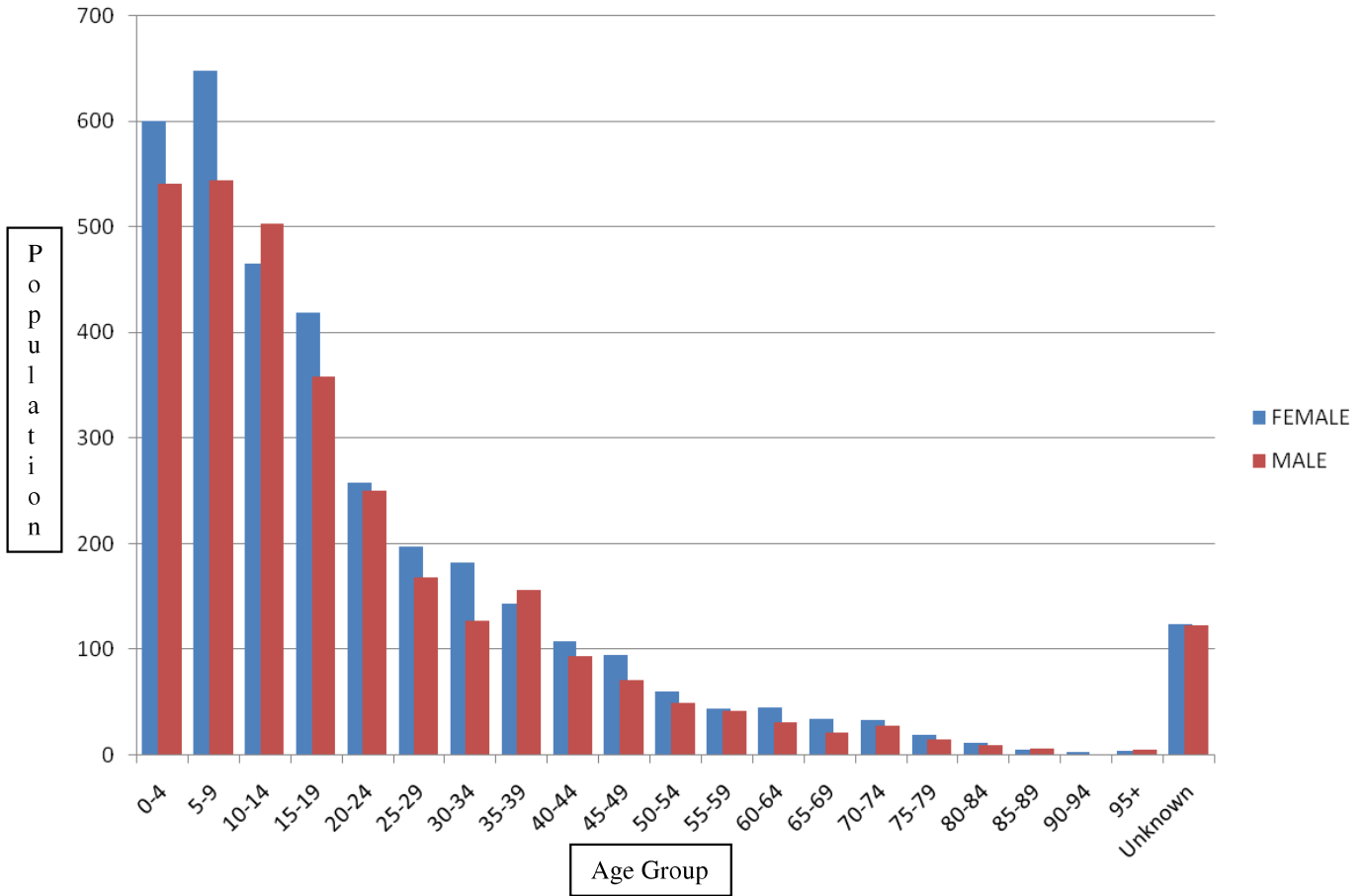
Below is a table showing age group distribution by gender in terms of number and percentage

AGE GROUP	FEMALE	%	MALE	%	Total
0-4	601	52.63	541	47.37	1,142
5-9	648	54.36	544	45.64	1,192
10-14	466	48.09	503	51.91	969
15-19	419	53.86	359	46.14	778
20-24	258	50.69	251	49.31	509
25-29	198	54.10	168	45.90	366
30-34	183	58.84	128	41.16	311
35-39	144	47.84	157	52.16	301
40-44	108	53.47	94	46.53	202
45-49	95	57.23	71	42.77	166
50-54	60	54.55	50	45.45	110
55-59	44	51.16	42	48.84	86
60-64	45	59.21	31	40.79	76
65-69	35	61.40	22	38.60	57
70-74	34	54.84	28	45.16	62
75-79	19	55.88	15	44.12	34
80-84	12	54.55	10	45.45	22
85-89	5	45.45	6	54.55	11
90-94	3	100.00	0	0.00	3
95+	4	44.44	5	55.56	9
Unknown	124	50.20	123	49.80	247
Total	3,505	52.68	3,148	47.32	6,653

The population in age group **Unknown** is individuals with completely unknown dates of birth.

Preliminary Demographic Findings From DSS Baseline Survey

A Bar Chart showing age group Population distribution by Gender



From the graph above, its evident that the general population of the people in the DSA are Female, at 52.68% an majority of the population are children below the age of 20 years.

Marital Status

Most of the spouses in the DSA living together are Co-habiting. This is almost double the number of spouses who are legally married. Married in this context has been taken as spouses who underwent church, traditional or civil marriage and Co-habiting are spouses who live together in a household as husband and wife with no marriage arrangements whatsoever. Below is a table that shows marital status of individuals in the DSA.

Marital Status	F	%	M	%	Total
COH	515	51.24	490	48.76	1,005
DIV	108	78.26	30	21.74	138
MAR	263	50.38	259	49.62	522
NMR	2,149	50.10	2,140	49.90	4,289
WID	281	88.92	35	11.08	316
Total	3,316	52.89	2,954	47.11	6,270

COH – Co-habiting, DIV – Divorce/Separated, MAR – Married, NMR – Single, WID – Widow/Widower

Preliminary Demographic Findings From DSS Baseline Survey

383 individuals have their marital status not updated yet. This gives us a total of 6,270 individuals with marital status distributed among the categories above.

Below is a gender distribution of Married individuals in the following respective age groups;

Age Group	F	M	Total
10-14	1	0	1
15-19	3	1	4
20-24	11	3	14
25-29	25	14	39
30-34	34	18	52
35-39	32	35	67
40-44	38	32	70
45-49	34	33	67
50-54	25	22	47
55-59	15	25	40
60-64	16	18	34
65-69	10	15	25
70-74	3	17	20
75-79	1	6	7
85-89	0	3	3
95+	1	2	3
UNK	15	14	29
Total	263	258	522

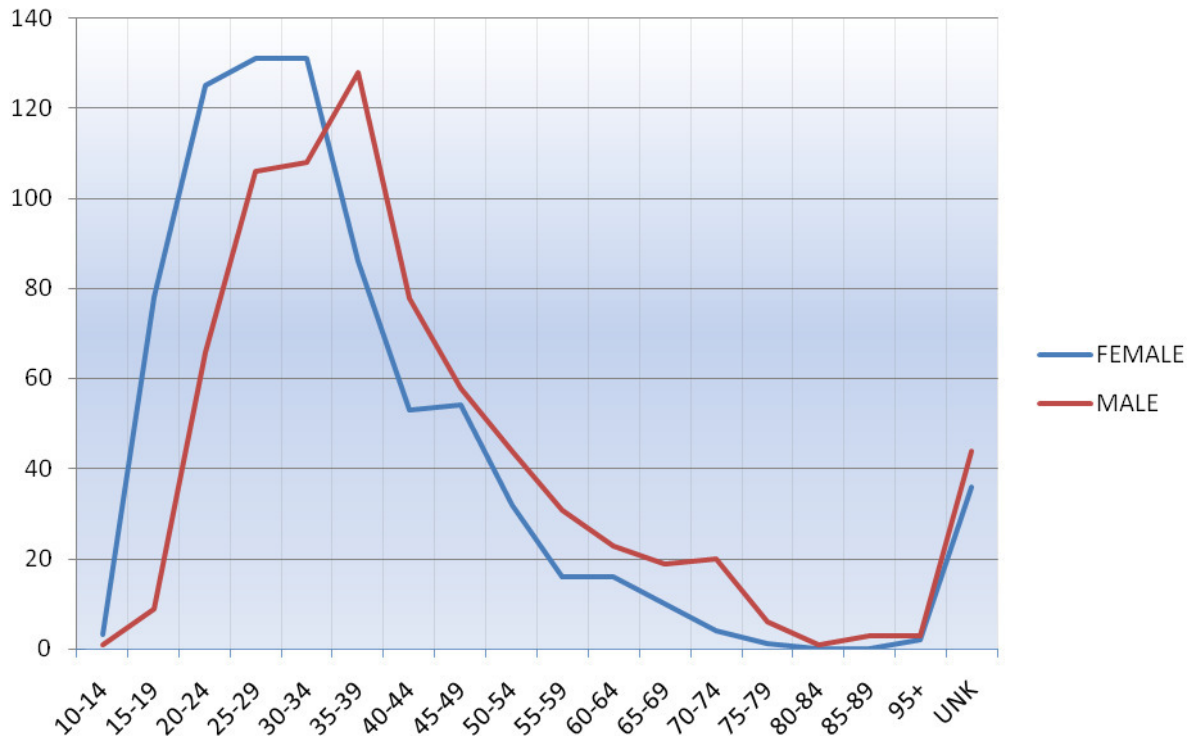
Below is a gender distribution of Co-Habiting individuals in the following respective age groups;

Age Group	F	M	Total
10-14	2	1	3
15-19	75	8	83
20-24	114	63	177
25-29	106	92	198
30-34	97	90	187
35-39	54	93	147
40-44	15	46	61
45-49	20	25	45
50-54	7	22	29
55-59	1	6	7
60-64	0	5	5
65-69	0	4	4
70-74	1	3	4
80-84	0	1	1
95+	2	1	3
UNK	21	30	51
Total	515	490	1,005

This finding is based on 41.8% of the expected population already entered into the Database.

Preliminary Demographic Findings From DSS Baseline Survey

A Graphical representation of a combination of Married and Co-habiting individuals



There are more female either married or co-habiting between the age of 10 to 34 than the male. There is a high rate of marriage or co-habiting among the female between the age of 10 and 24. The male rate of marriage or co-habiting is high at between the ages of 20 to 29.

Head of Households

In the DSA, there are more Male headed household than the Female. Below is a table showing the number and percentage of the household heads;

Gender	Freq.	Percent
Female	365	30.67
Male	825	69.33
Total	1,190	100

Preliminary Demographic Findings From DSS Baseline Survey

Table below shows household head by gender and Age group

Age Group	Female	Male	%	Total
10-18	1	2	0.25	3
19-25	27	95	10.25	122
26-35	54	235	24.29	289
36-50	122	290	34.62	412
51+	137	169	25.71	306
UNK	14	44	4.87	58
Total	355	835	100.00	1,190

Out of the 1,190 households, majority of the household heads are from the age group of 36 – 50 year. There are child – headed households in the DSA although not so many.

Summary

The statistics contained in this finding are bound to change after all the data collected from the field are entered into the Database. We estimate about 3,000 households to be captured into the Database by mid August.

Prepared by: Okumu Ceaser Law, *Data Supervisor*